



1059, boulevard des Entreprises Ouest
 Terrebonne, QC Canada J6Y 1V2
 Tel 450-628-1006 1.800.783.6883
 Fax 450-628-7801 1.888.783.6883
 www.plasticase.com

CUBED FOAM INSERT

PROJECT

950_NANUK

PRODUCT

00950FV_NANUK

DWG ID

p.00

STATUS

IP
INIT

YOUR SIGNATURE IS REQUIRED FOR APPROVAL BEFORE ANY RELEASE OF PRODUCTION DRAWINGS

SIGNATURE

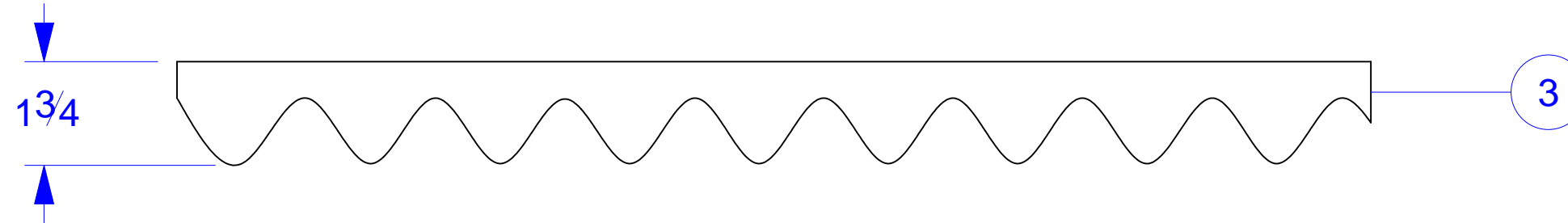
DATE

DESCRIPTION CHANG.

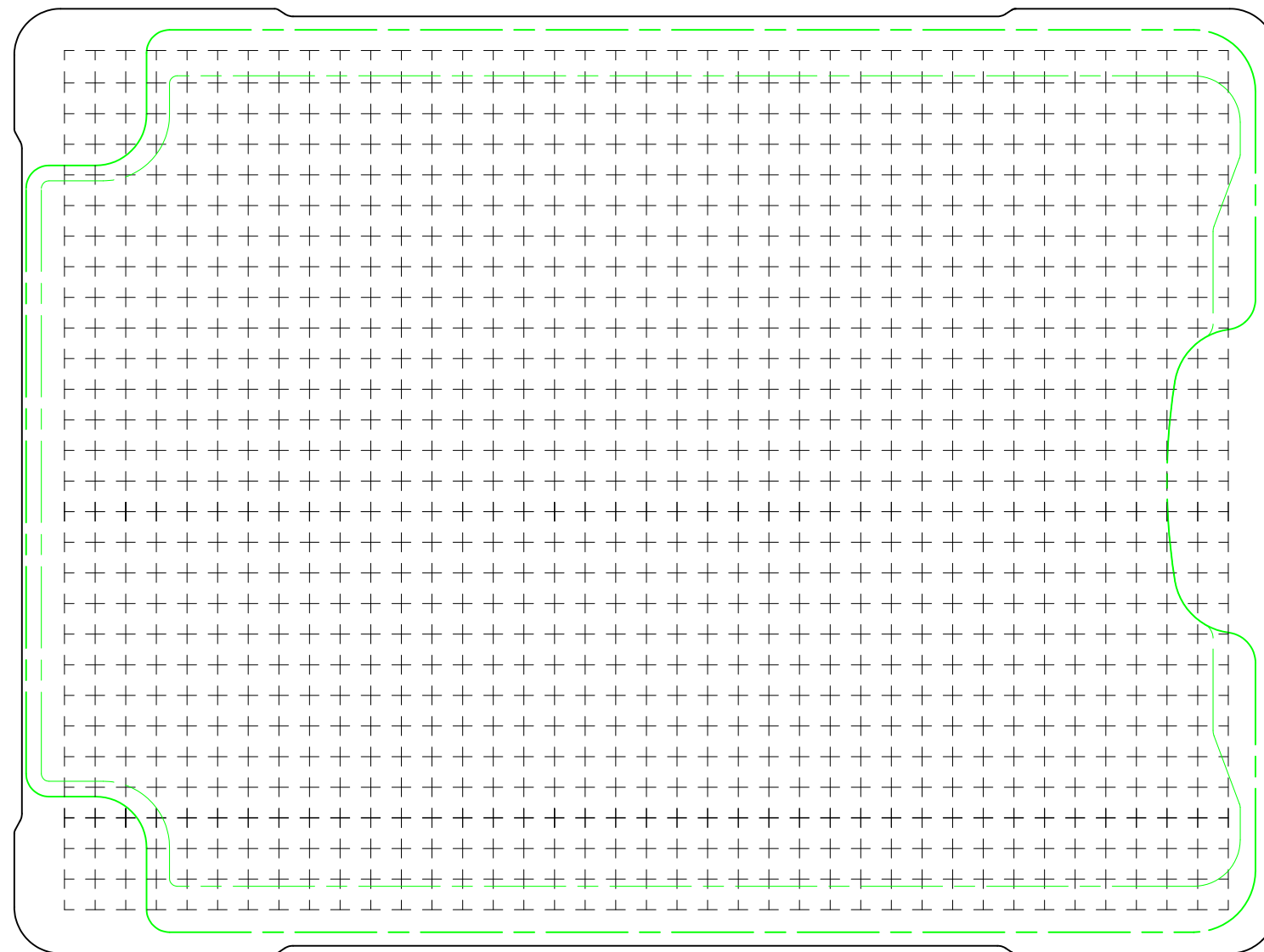
DATE

ASSEMBLY

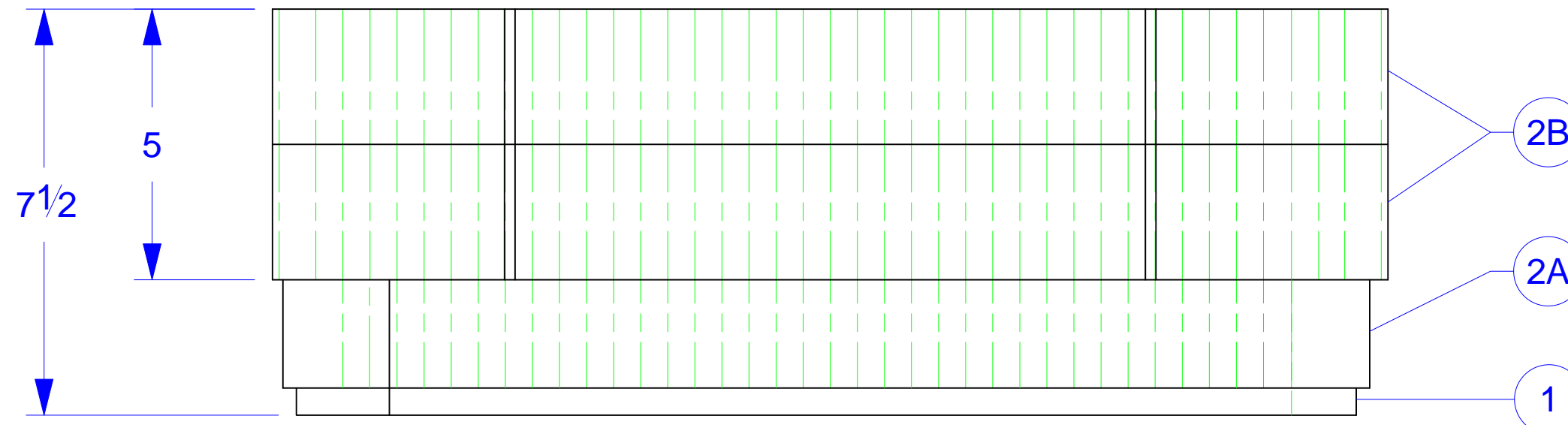
LID EGGSHELL



BASE TRAY



BASE TRAY - ELEVATION



FOAM DENSITY MAY VARY
 DIMENSIONS ARE IN INCHES UNLESS OTHERWISE SPECIFIED



THE INFORMATION CONTAINED IN THIS DRAWING IS THE SOLE AND EXCLUSIVE PROPERTY OF PLASTICASE INC.
 ANY REPRODUCTION IN PART OR WHOLE WITHOUT THE WRITTEN PERMISSION OF PLASTICASE INC. IS PROHIBITED

TO FIT
SCALE

AS REQUESTED
CONCEPT

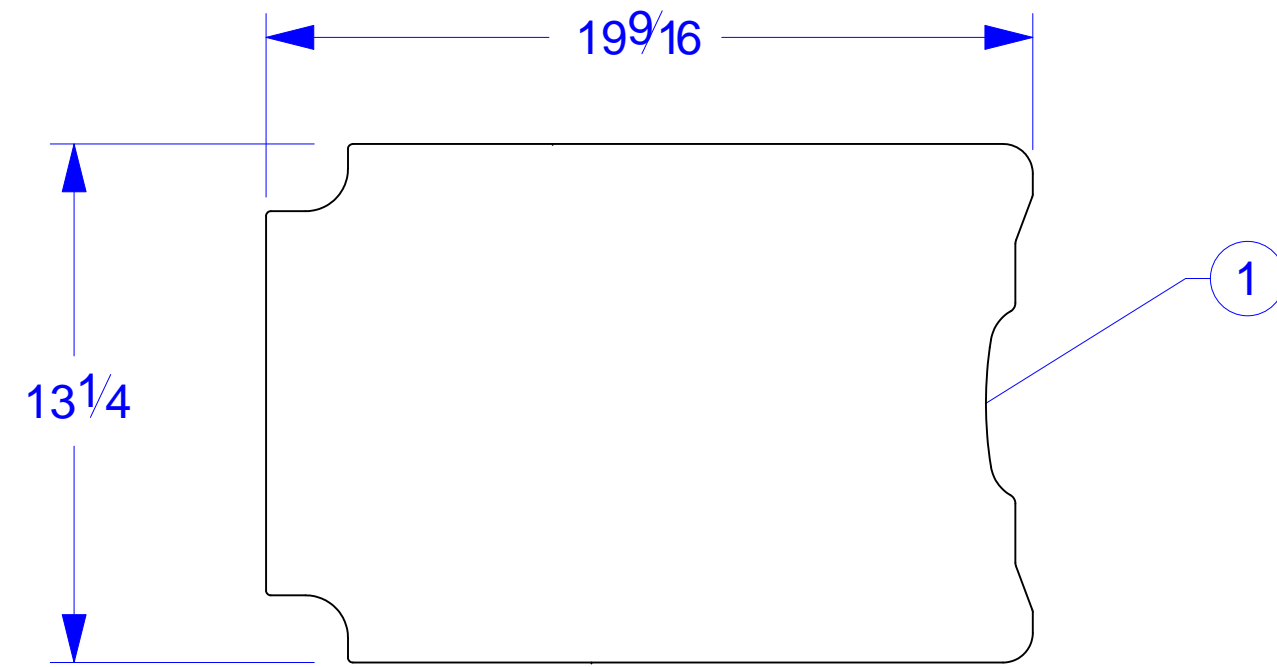
Frank Vitiello
REPRESENTATIVE

Vanessa Moscato
DESIGNER

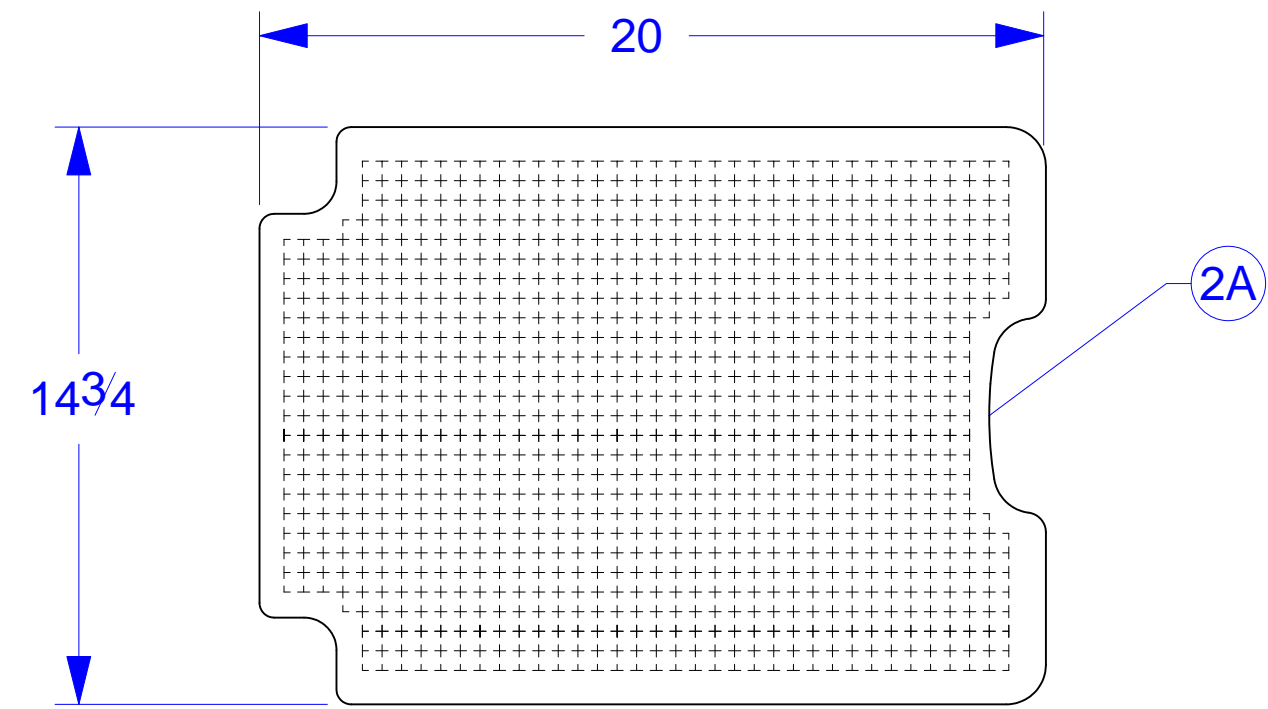
2013.04.17
DATE INIT

1/3

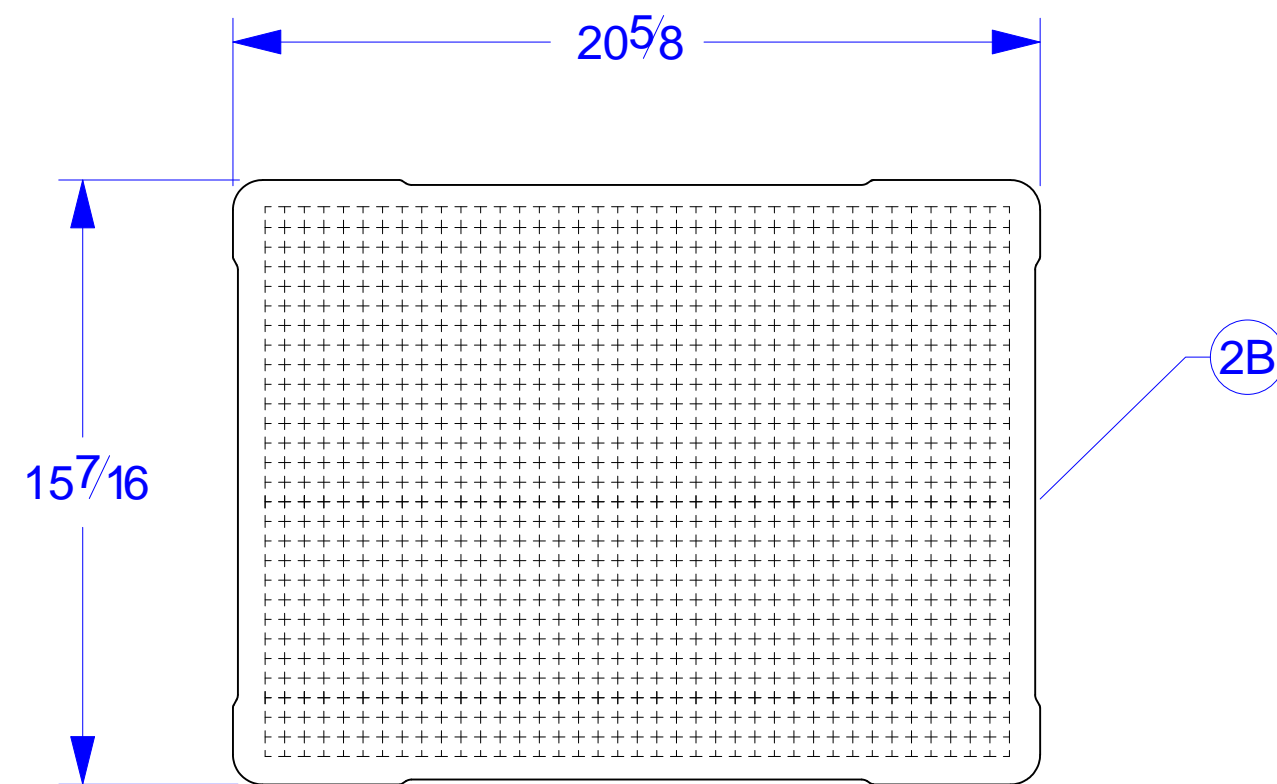
LAYOUT



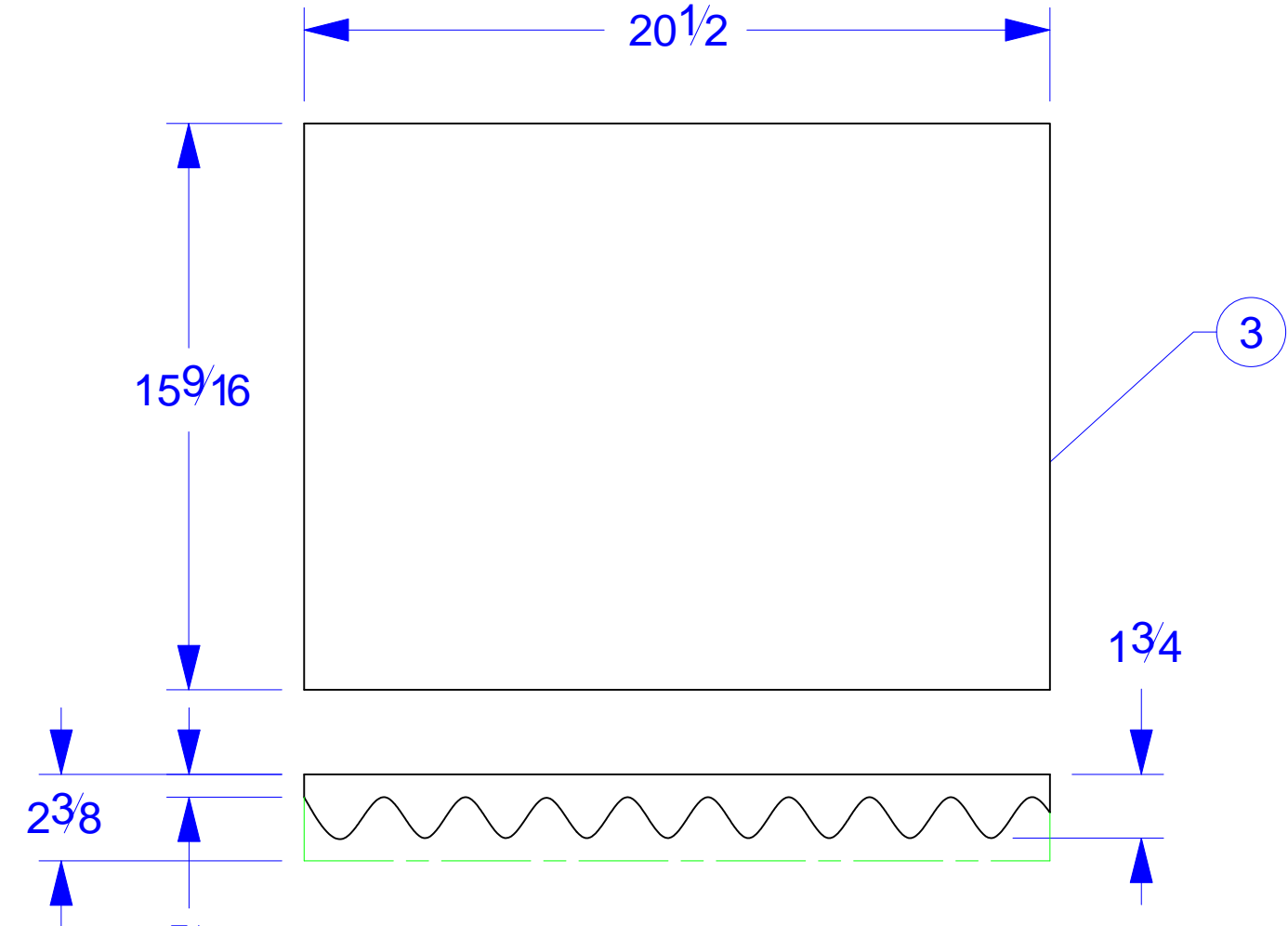
PUF 1.5 BLACK 1/2" THICK		
MATERIAL		
-	65"	1
DETAILS	LINEAR IN	QTY



PUF 1.5 BLACK 2" THICK		
MATERIAL		
-	702"	1
DETAILS	LINEAR IN	QTY



PUF 1.5 BLACK 2 1/2" THICK		
MATERIAL		
-	807"	2
DETAILS	LINEAR IN	QTY



PUF 1.5 BLACK CV 2 3/8" THICK 5/8" BASE		
MATERIAL		
-	-"	1
DETAILS	LINEAR IN	QTY

FOAM DENSITY MAY VARY
 DIMENSIONS ARE IN INCHES UNLESS OTHERWISE SPECIFIED



1059, boulevard des Entreprises Ouest
 Terrebonne, QC Canada J6Y 1V2
 Tel 450-628-1006 1.800.783.6883
 Fax 450-628-7801 1.888.783.6883
 www.plasticase.com

CUBED FOAM INSERT

PROJECT

950_NANUK

PRODUCT

009505FV_NANUK

DWG ID

p.00

STATUS

IP

YOUR SIGNATURE IS REQUIRED FOR APPROVAL BEFORE ANY RELEASE OF PRODUCTION DRAWINGS

SIGNATURE

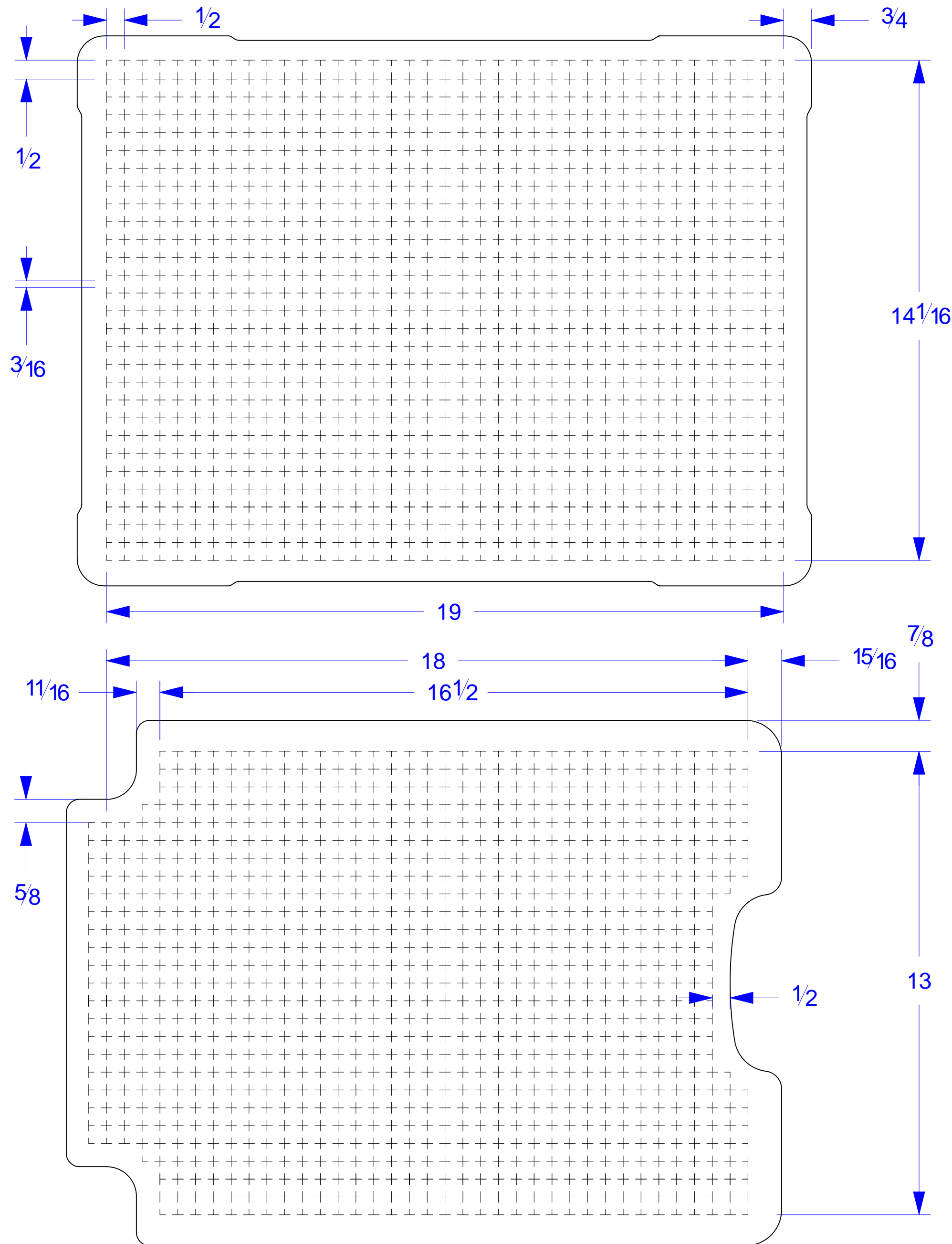
DATE

DESCRIPTION CHANG.

DATE

INIT

DETAILS



FOAM DENSITY MAY VARY
 DIMENSIONS ARE IN INCHES UNLESS OTHERWISE SPECIFIED