



1059, boulevard des Entreprises Ouest  
 Terrebonne, QC Canada J6Y 1V2  
 Tel 450-628-1006 1.800.783.6883  
 Fax 450-628-7801 1.888.783.6883

www.plasticase.com

**CUBED FOAM INSERT**

PROJECT

**612\_CLI KCASE**

PRODUCT

00612\_CLI KCASE

DWG ID

p.02

STATUS

YOUR SIGNATURE IS REQUIRED FOR APPROVAL BEFORE ANY RELEASE OF PRODUCTION DRAWINGS

SIGNATURE

DATE

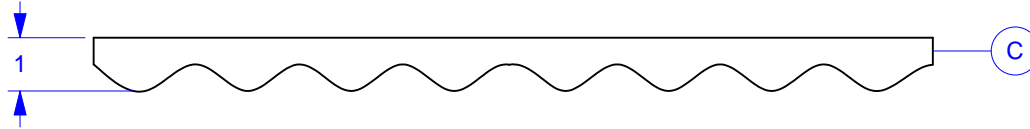
DESCRIPTION CHANG.

DATE

INIT

**ASSEMBLY**

LID EGGSHELL



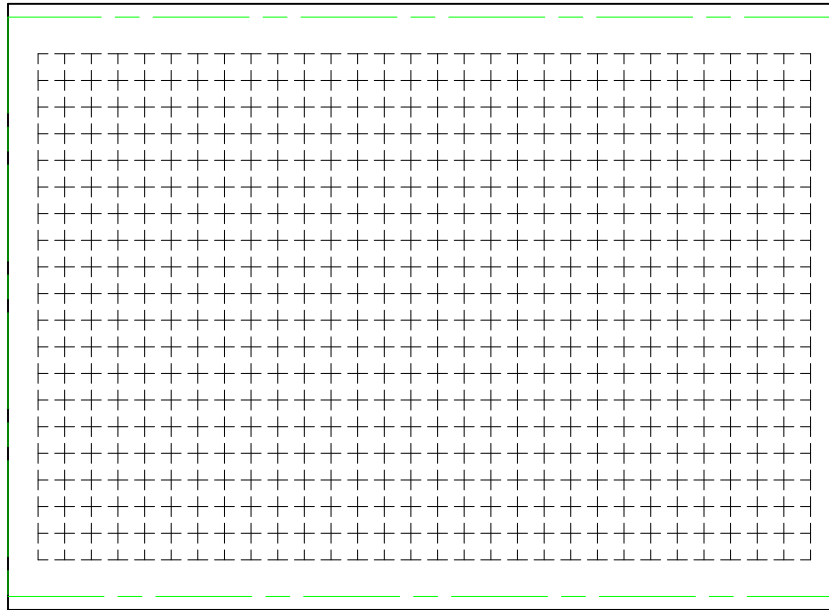
modified "C"	11.03.31	VM
modified height of "C"	11.04.05	VM
-	-	-
-	-	-

**GLUED** TOP  BASE  VELCRO  XTRA   
**SILKSCREEN** PRINT  PLAIN   
**QUANTITY** - \_\_\_\_\_  
**COLOR** - \_\_\_\_\_

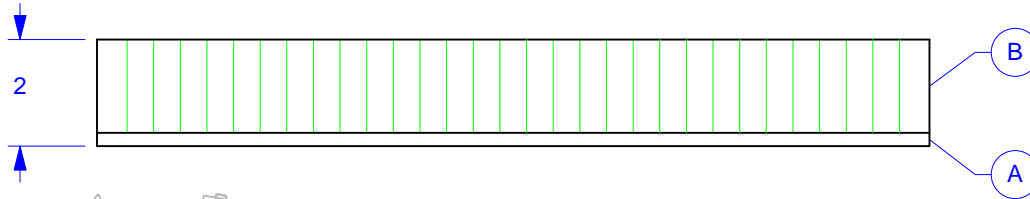
**TOLERANCES**

CUTOUTS +/- 1/16  
 OVERALL FOAM THICKNESS & CAVITY DEPTHS +/- 1/8

BASE TRAY



BASE TRAY - ELEVATION



FOAM DENSITY MAY VARY  
 DIMENSIONS ARE IN INCHES UNLESS OTHERWISE SPECIFIED

THE INFORMATION CONTAINED IN THIS DRAWING IS THE SOLE AND EXCLUSIVE PROPERTY OF PLASTICASE INC.  
 ANY REPRODUCTION IN PART OR WHOLE WITHOUT THE WRITTEN PERMISSION OF PLASTICASE INC. IS PROHIBITED

TO FIT  
 SCALE

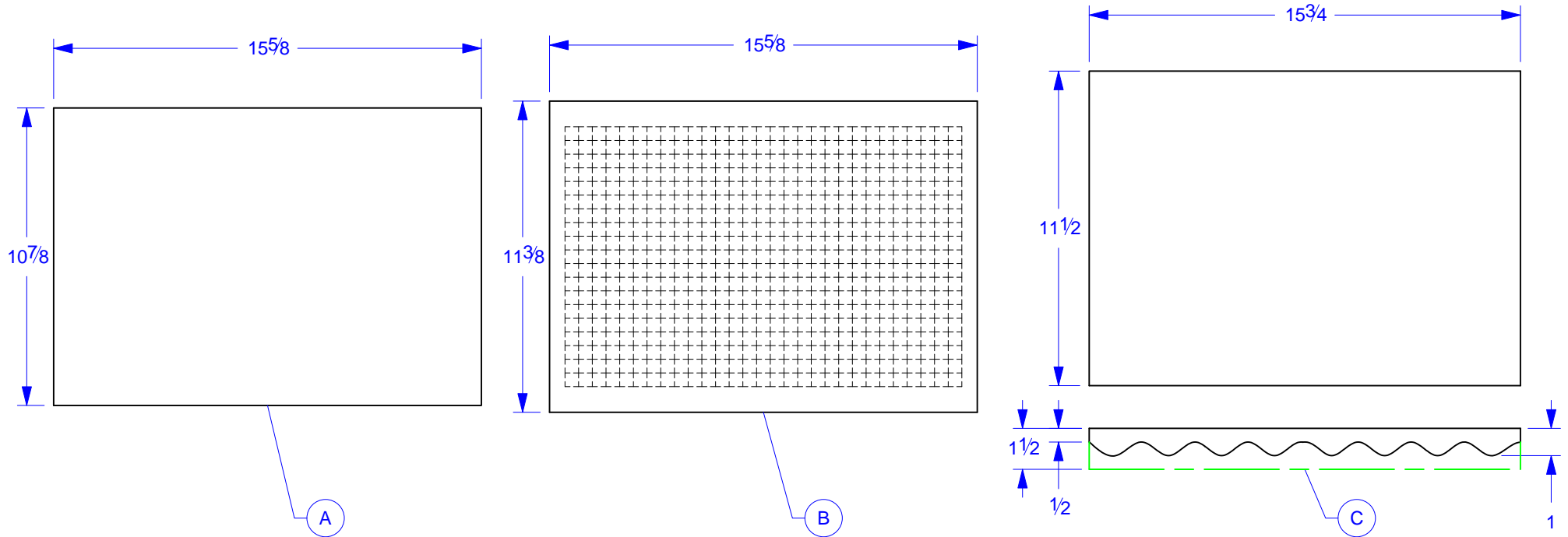
AS REQUESTED  
 CONCEPT

Frank Vitiello  
 REPRESENTATIVE

Vanessa Moscato  
 DESIGNER

2011.02.18  
 DATE INIT

LAYOUT



PUF 1.8 BLACK 1/4" THICK		
MATERIAL		
-	-"	1
DETAILS	LINEAR IN	QTY

PUF 1.8 BLACK 1 3/4" THICK		
MATERIAL		
-	486"	1
DETAILS	LINEAR IN	QTY

PUF 1.8 BLACK CV 1 1/2" THICK 1/2" BASE		
MATERIAL		
-	-"	1
DETAILS	LINEAR IN	QTY

FOAM DENSITY MAY VARY  
 DIMENSIONS ARE IN INCHES UNLESS OTHERWISE SPECIFIED



1059, boulevard des Entreprises Ouest  
 Terrebonne, QC Canada J6Y 1V2  
 Tel 450-628-1006 1.800.783.6883  
 Fax 450-628-7801 1.888.783.6883  
 www.plasticase.com

CUBED FOAM INSERT

PROJECT

YOUR SIGNATURE IS REQUIRED FOR APPROVAL BEFORE ANY RELEASE OF PRODUCTION DRAWINGS

SIGNATURE

612\_CLI KCASE

PRODUCT

DATE

00612\_CLI KCASE

DWG ID

DESCRIPTION CHANG.

DATE

p.02

STATUS

INIT

DETAILS

